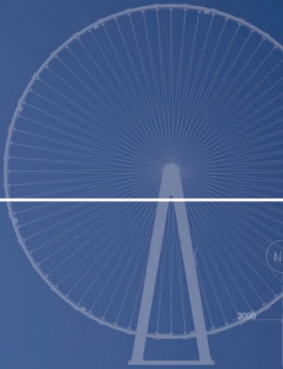
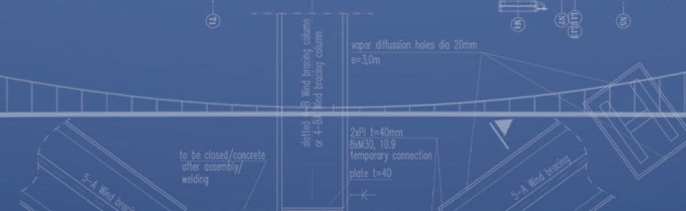
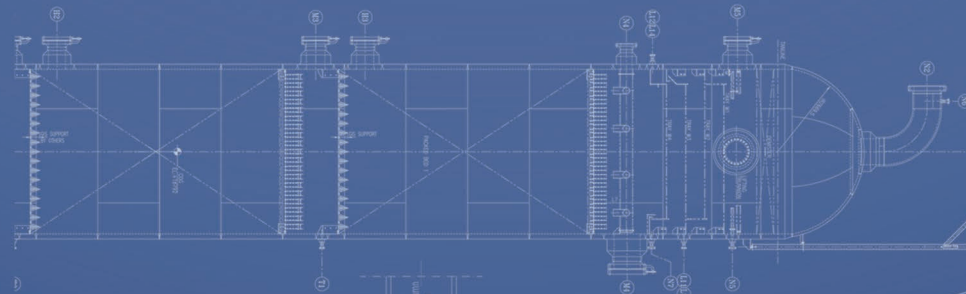
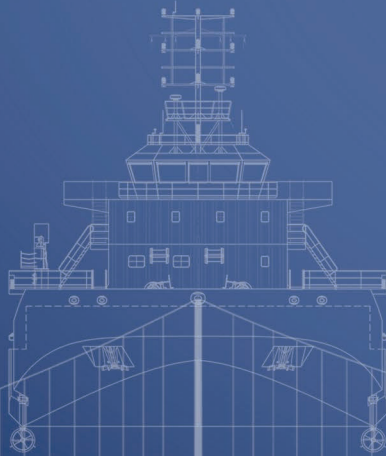


cimtas | shipyard

COMPANY OVERVIEW 2025



WHO WE ARE



ÇİMTAŞ SHIPYARD fabricates structural steel, steel wind towers, offshore structures, modules and sea vessels at its facility having vast assembly yards and a self-quay for direct sea transportation.

cimtas | shipyard



80,000 t
Fabrication



70,000 t
Assembly



1,400
Employees



150 M
USD Revenue



400 t
Portal Crane Capacity



2,000 t
Handling Capacity



Zero
Accident Policy



Free Trade
Zone

ENKA

More than **570** Projects in **53** Countries
More than **60 Billion USD** Historical Contract Value

53rd @ ENR Top 250 International Contractors List - 2023
More than **20,000** Employees



OIL, GAS & PETROCHEMICALS



POWER PLANTS



INFRASTRUCTURE



BUILDING WORKS

WORLDWIDE PROJECTS



BUSINESS LINES



**STRUCTURAL
STEEL**



**STEEL
WIND TOWERS**



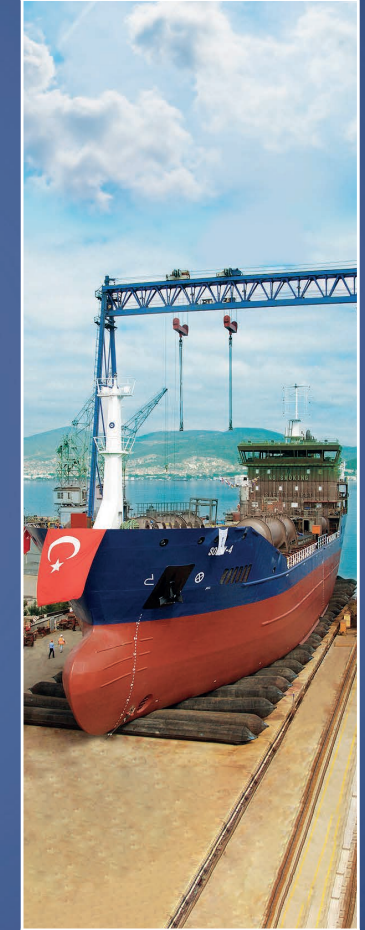
**OFFSHORE
STRUCTURES**



MODULARIZATION



POWERSHIPS



SHIPBUILDING

STRUCTURAL STEEL

ENGINEERING
ASSEMBLY

FABRICATION
TRANSPORTATION



Steel Bridges



Industrial Plants



Airports



Power, Oil & Gas Plants

1915 ÇANAKKALE SUSPENSION BRIDGE GIRDER BLOCK

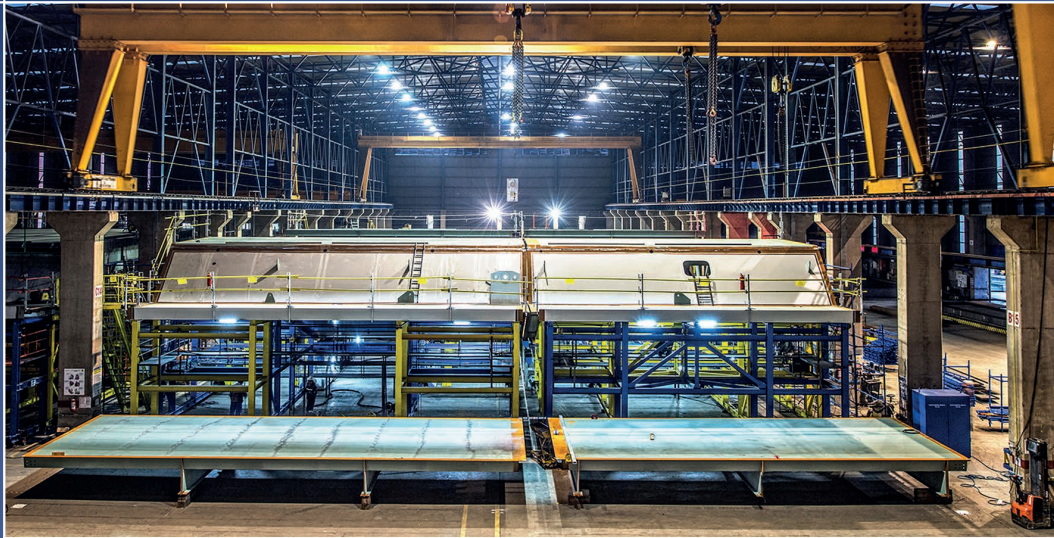
OSMANGAZI SUSPENSION BRIDGE

ENGINEERING
TRIAL ASSEMBLY

FABRICATION
TRANSPORTATION

52,000 t 1,550 m 2,682 m 252 m





GIRDER BLOCK FORMATION



GIRDER BLOCK TRIAL ASSEMBLY & STORAGE



GIRDER BLOCK TRIAL ASSEMBLY



GIRDER BLOCK TRANSPORTATION

1915 ÇANAKKALE SUSPENSION BRIDGE

The World's Longest Suspension Bridge

ENGINEERING
TRIAL ASSEMBLY

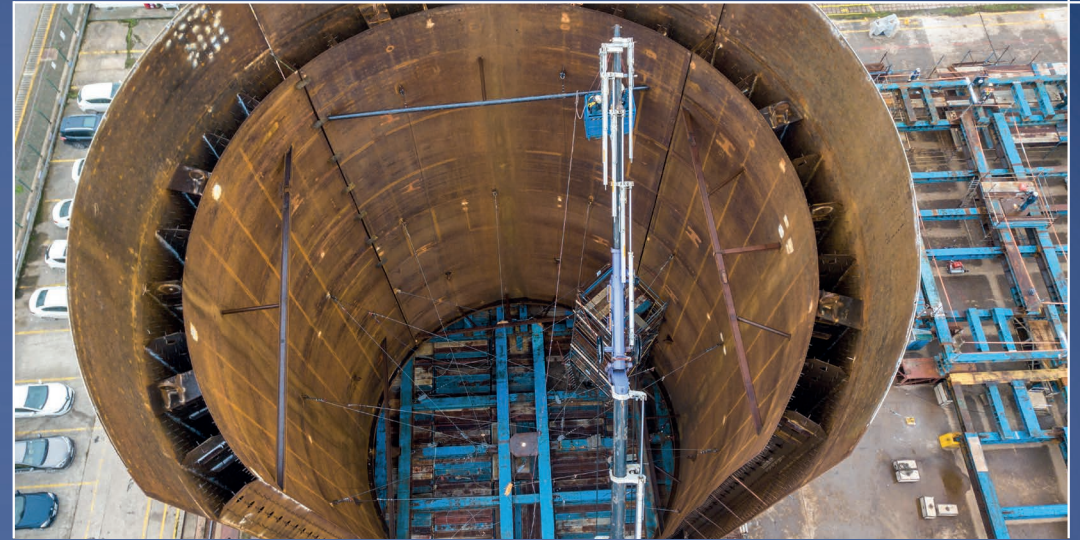
FABRICATION
TRANSPORTATION

📏 105,000 t 🚢 2,023 m ↔ 3,563 m ↓ 318 m





SHAFT FABRICATION



SHAFT ASSEMBLY



ANCHOR FRAME FABRICATION



SHAFT TRANSPORTATION



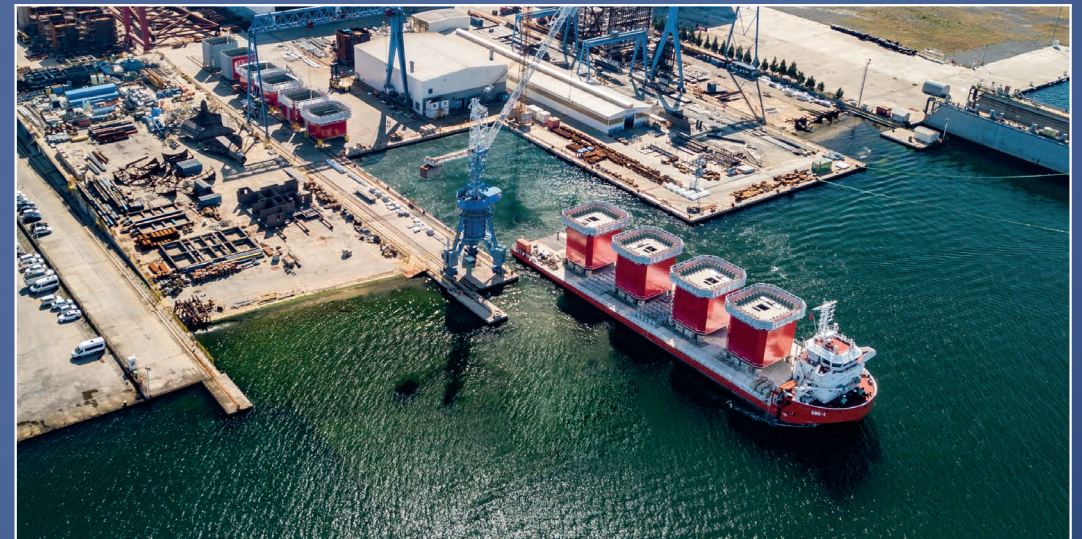
TOWER BLOCK FORMATION



TOWER CROSS BEAM TRIAL ASSEMBLY



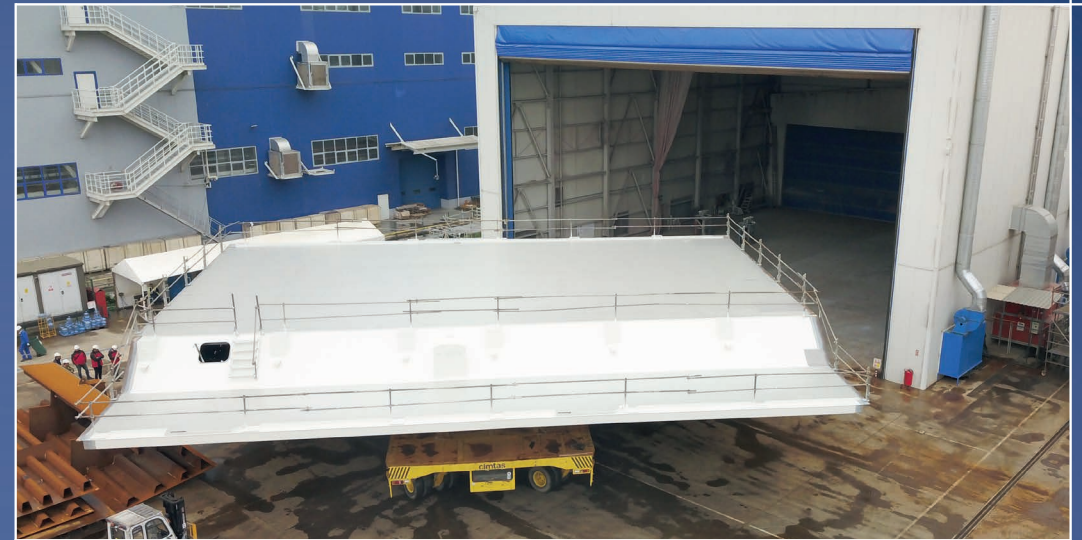
TOWER BLOCK TRIAL ASSEMBLY



TOWER BLOCK TRANSPORTATION



GIRDER BLOCK FORMATION



GIRDER BLOCK PAINTING



GIRDER BLOCK TRIAL ASSEMBLY



GIRDER BLOCK TRANSPORTATION

STEEL WIND TOWERS

MASS PRODUCTION FIELD SERVICES
MECHANICAL & ELECTRICAL ASSEMBLY



170,000 t
in Total



1,200
Section /Year



11 Countries



8 m



45 m
Section



400 t
Section



150 mm
Cold Plate Rolling



Onshore & Offshore



OFFSHORE STRUCTURES

ENGINEERING
ASSEMBLY

FABRICATION
TRANSPORTATION



Floating Offshore
Structures



Monopiles &
Transition Pieces



Jackets



Top sides &
FPSO-FSRU Modules



On - Site
Machining



Electrical
Appurtenances



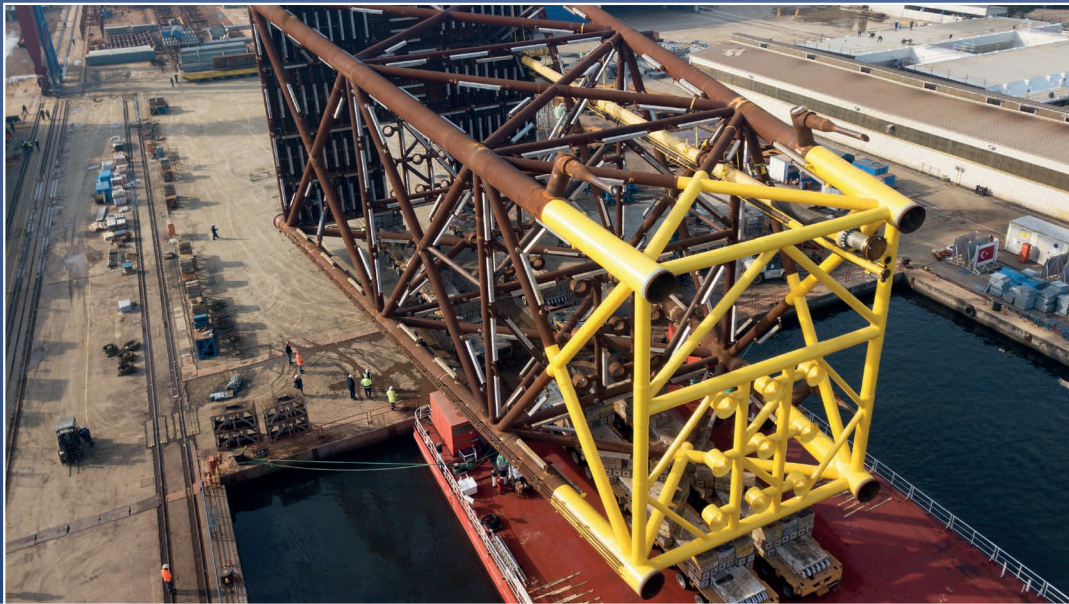
Cathodic
Protection

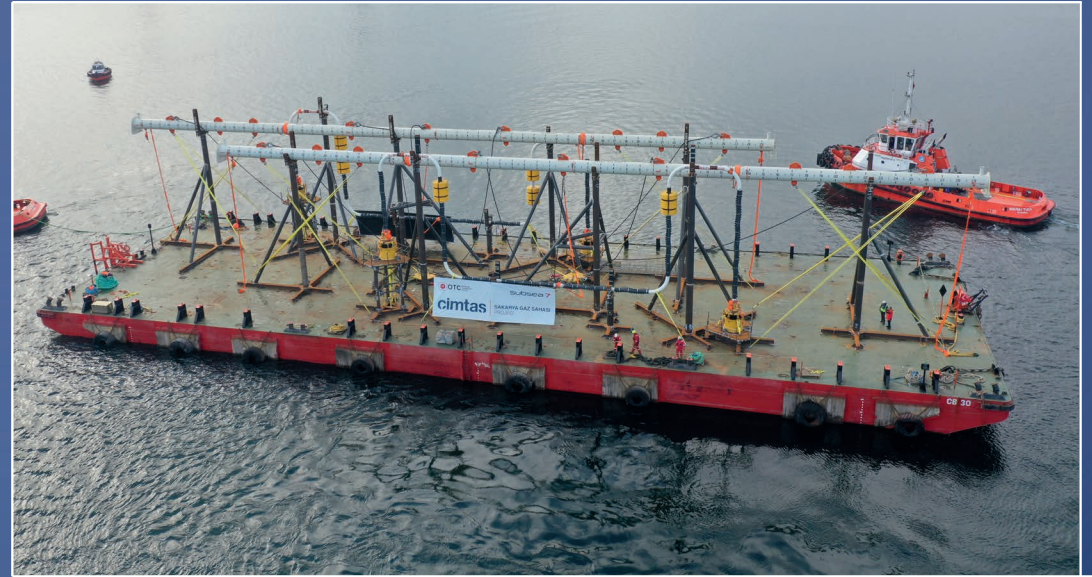


Mechanical
Installation

KUZEY MARMARA UNDERGROUND GAS STORAGE EXPANSION PROJECT  4,000 t

Türkiye



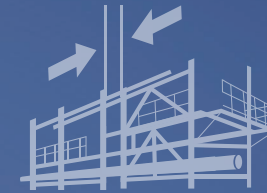


SAKARYA GAS FIELD DEVELOPMENT PROJECT

MODULARIZATION

ENGINEERING
ASSEMBLY

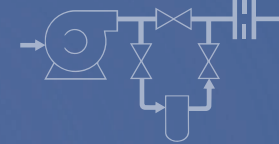
FABRICATION
TRANSPORTATION



Structural Assembly



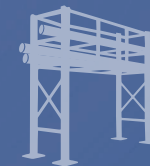
Piping
Fabrication & Installation



**Equipment &
Instrumentation**
Installation



Mechanical & Electrical
Installation



Pre-Assembled
Racks



Pre-Assembled
Units



Process Skids



Modular
Bridges

WEST QURNA PROJECT 2,000 t

Iraq



POWERSHIPS

ENGINEERING
ASSEMBLY

FABRICATION
COMMISSIONING



Structural Works



Piping Works



Equipment & Instrumentation Installation



Mechanical & Electrical Installation



KPS6 POWERSHIP ⚡ **114 MW** ↔ 158 m x 28 m



SHIPBUILDING

ENGINEERING FABRICATION
MECHANICAL - ELECTRICAL WORKS



Barges



Tankers



Gas Carriers



Special Service Vessels



GMK-1 DYNAMIC POSITIONING SERVICE VESSEL DWT: 4,200 t 93 m x 22 m



☐ DWT: **7,000 t** ⇄ 110 m x 17 m



☐ DWT: **5,850 t** ⇄ 106 m x 17 m



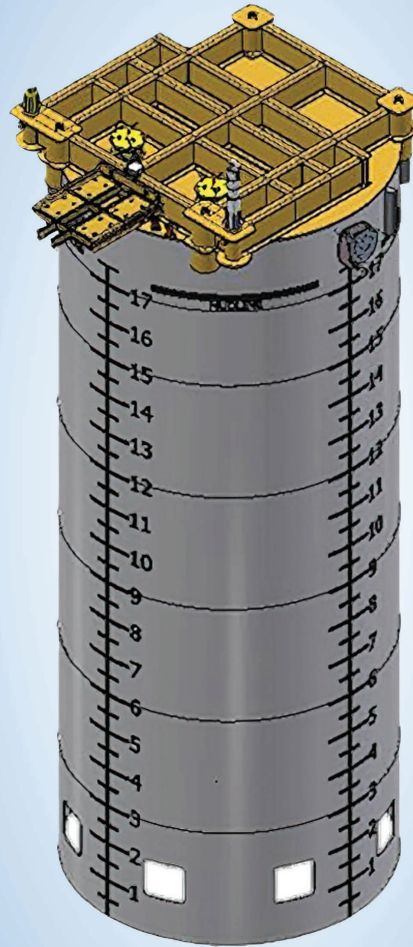
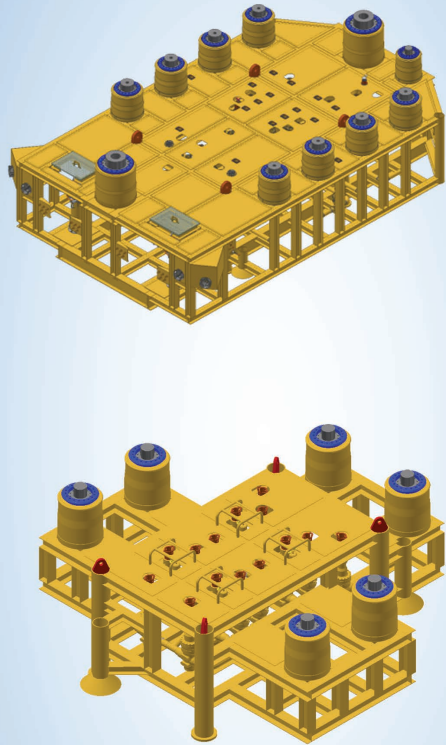
☐ DWT: **5,800 t** ⇄ 105 m x 18 m



☐ DWT: **5,700 t** ⇄ 100 m x 16,6 m

ENGINEERING

SOPHISTICATED & UP-TO-DATE SOFTWARES
DATA MANAGEMENT PACKAGES



KUZEY MARMARA UNDERGROUND GAS STORAGE EXTENSION PROJECT - 3D MODEL



Analysis



Connection Design



Modeling



Shop Drawing



Coding



BIM



Method Engineering



R & D

OPERATIONS

PRODUCTION
PROCUREMENT

QUALITY
LOGISTICS



50
Engineers



10
Fabrication Halls



CNC
Operations



5-AXIS
Machining



Indoor/Outdoor
Assembly



Blasting &
Painting



400 t
Portal Crane Capacity



2,000 t
Handling Capacity



CNC PLATE BENDING



5-AXIS CNC MACHINING



ROBOTIC - AUTOMATED - MANUAL WELDING



CNC PROFILE CUTTING - DRILLING



CNC CUTTING - DRILLING



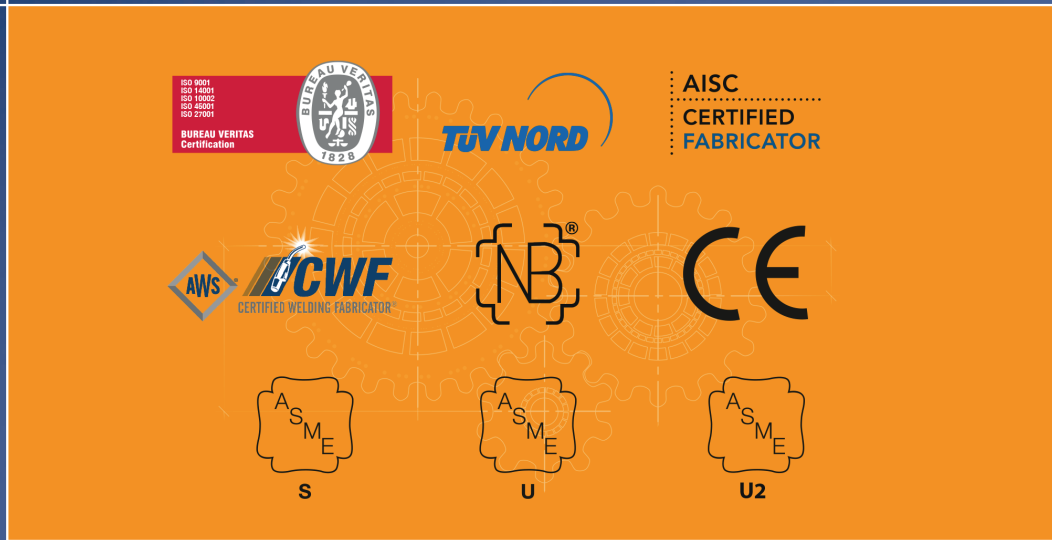
COLD PLATE ROLLING



CNC CUTTING - WELDING



ROBOTIC - MANUAL BLASTING - PAINTING



CERTIFIED QUALITY MANAGEMENT SYSTEMS



INDEPENDENT QA&QC ORGANIZATION



IN-HOUSE CERTIFIED NDE PERSONNEL



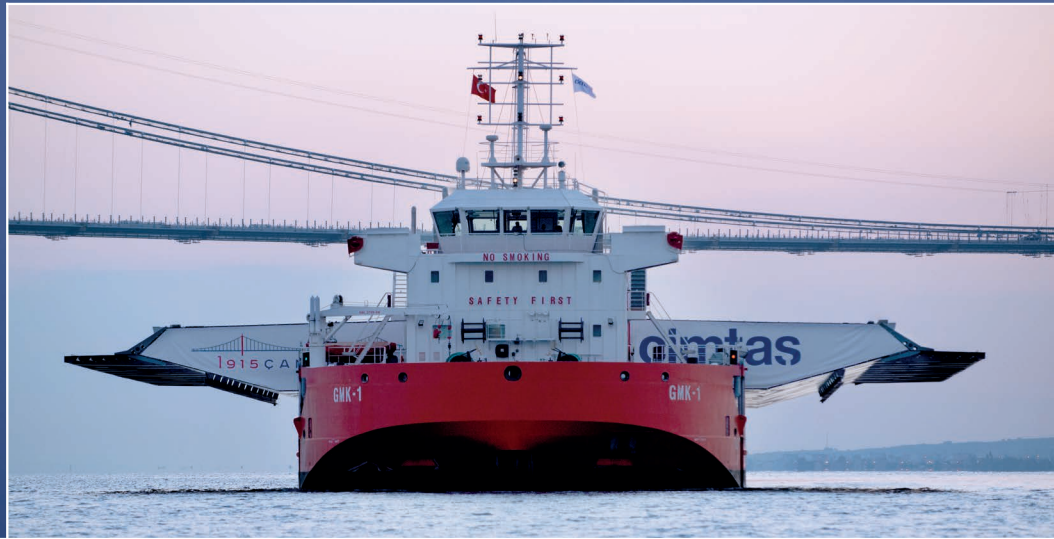
HIGH-END TECHNOLOGY



DIRECT SEA ACCESS



3 INTERNATIONAL DEEP SEA PORTS



OWN LAND & SEA FLEET



IN-HOUSE LOGISTICS ORGANIZATION

ACCESS MAP



GROUP COMPANIES

ÇİMTAŞ STEEL



Gemlik / Türkiye

Fenced Area : 160,000 m²
Covered Area : 62,000 m²
Number of Employees : 2,000
Annual Fab. Capacity : 80,000 t

ÇİMTAŞ PIPE



Gemlik / Türkiye

Fenced Area : 120,000 m²
Covered Area : 75,000 m²
Number of Employees : 1,000
Annual Spool Fab. Capacity : 42,000 t
Pipe-Fitting Manufacturing : 165,000 t
Annual Fittings Capacity : 6,000 t
Annual LSAW Process Pipe Capacity : 40,000 t
Annual LSAW Line Pipe Capacity : 160,000 t

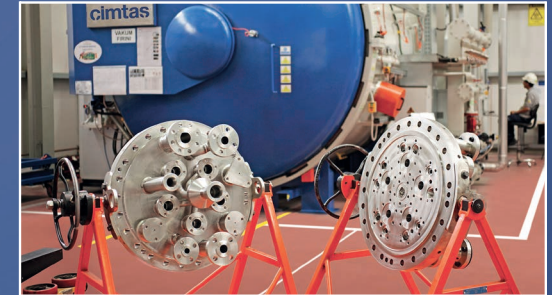
ÇİMTAŞ NINGBO



Ningbo / China

Fenced Area : 56,000 m²
Covered Area : 32,000 m²
Number of Employees : 650
Annual Fab. Capacity : 20,000 t

ÇİMTAŞ MACHINING



Gemlik / Türkiye

Fenced Area : 13,000 m²
Covered Area : 12,000 m²
Number of Employees : 300



FOR MORE
www.cimtasshipyard.com
THANK YOU

